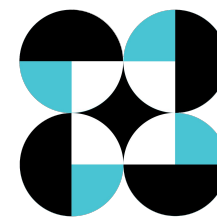




The National Copernicus Capacity Support Action Programme for the Philippines (CopPhil)



PhilSA

3rd Asia-Europe Sustainable Connectivity Scientific Conference (AESCON3)

14 June 2023



The CopPhil Program



National Copernicus Capacity Support Action Programme for the Philippines



- Supports the Philippine Government's objectives of developing and **leveraging Space Science and Technology Applications** to strengthen the nation's resilience to natural disasters and climate change.
- A pioneer initiative in **Asia and Asia Pacific** and a starting point for a larger programme on **Digital Connectivity**.
- Funded by the EU: 3 years, 10M Euro
- Co-implemented by ESA, PhilSA, and DOST.



The CopPhil Program



National Copernicus Capacity Support Action Programme for the Philippines



- The EU's Earth observation flagship programme, Copernicus provides open environment and climate data derived from a constellation of satellites – the Sentinels.
- In the Philippines, Sentinel data have been utilized to map, monitor, and assess the environment, hazards and risks, and support climate action.





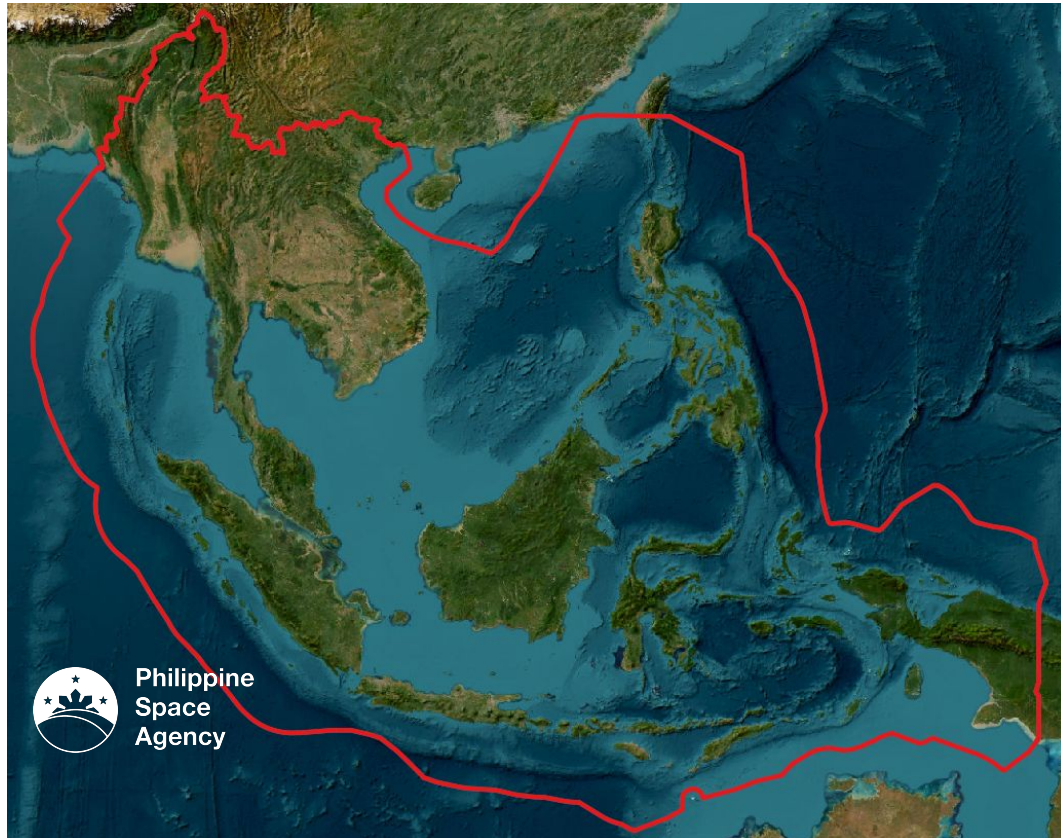
The CopPhil Program



National Copernicus Capacity Support Action Programme for the Philippines



Mirror site in the Philippines



- One feature of CopPhil is the establishment of a **Copernicus Mirror Site in the Philippines**.
- The Mirror Site will store Copernicus satellite images on a **national scale** and shall extend to a **regional coverage** in the near future.
- PhilSA will sign the **Copernicus Administrative Arrangement (CAA)** with the EU (DG-DEFIS).
- The CAA governs **data access and exchange** that facilitates the Mirror Site operation, which shall be **primarily managed by PhilSA**.



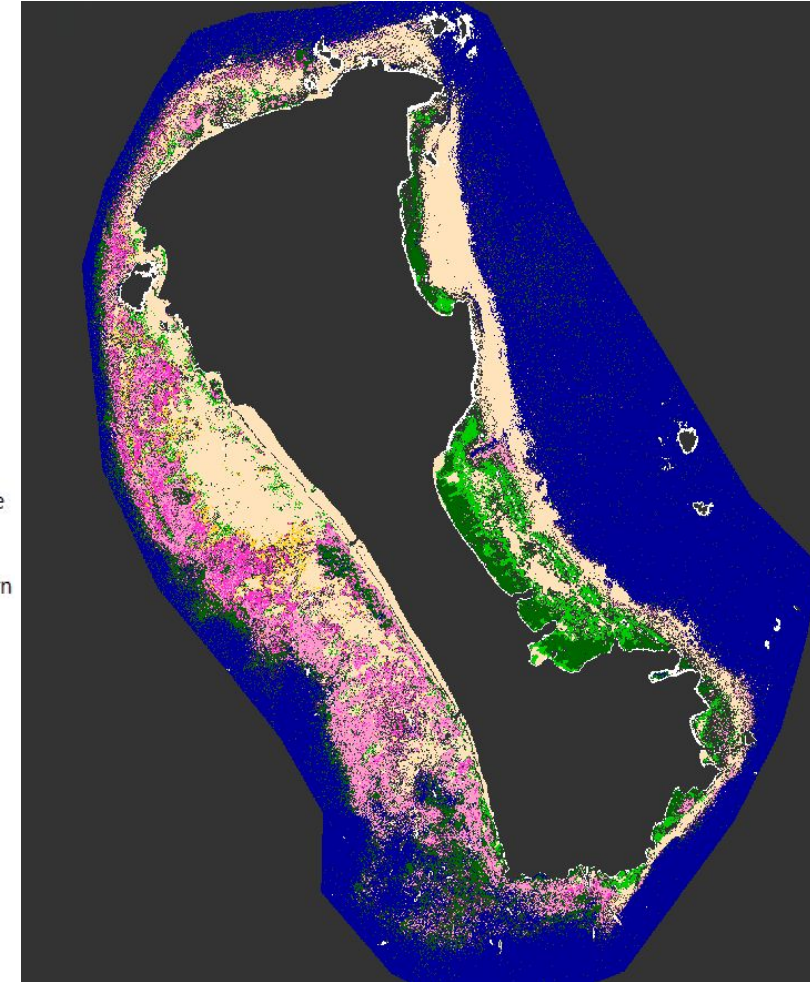
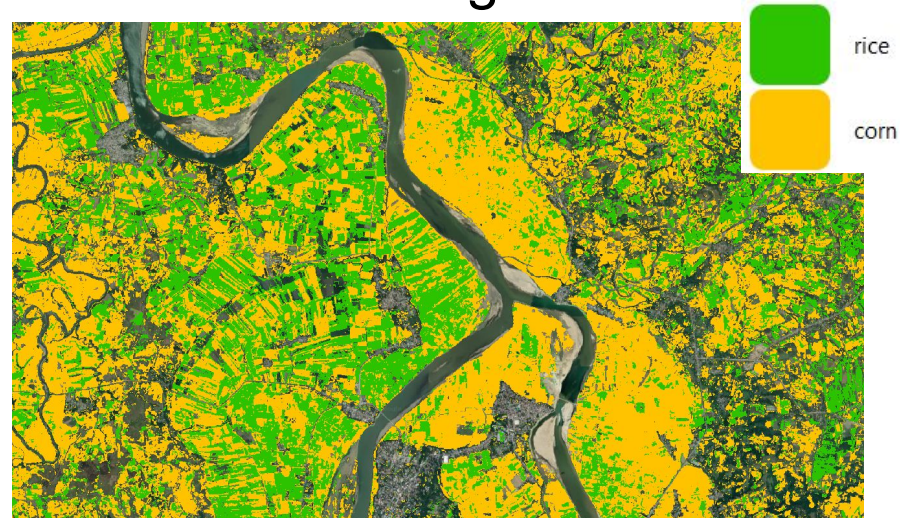
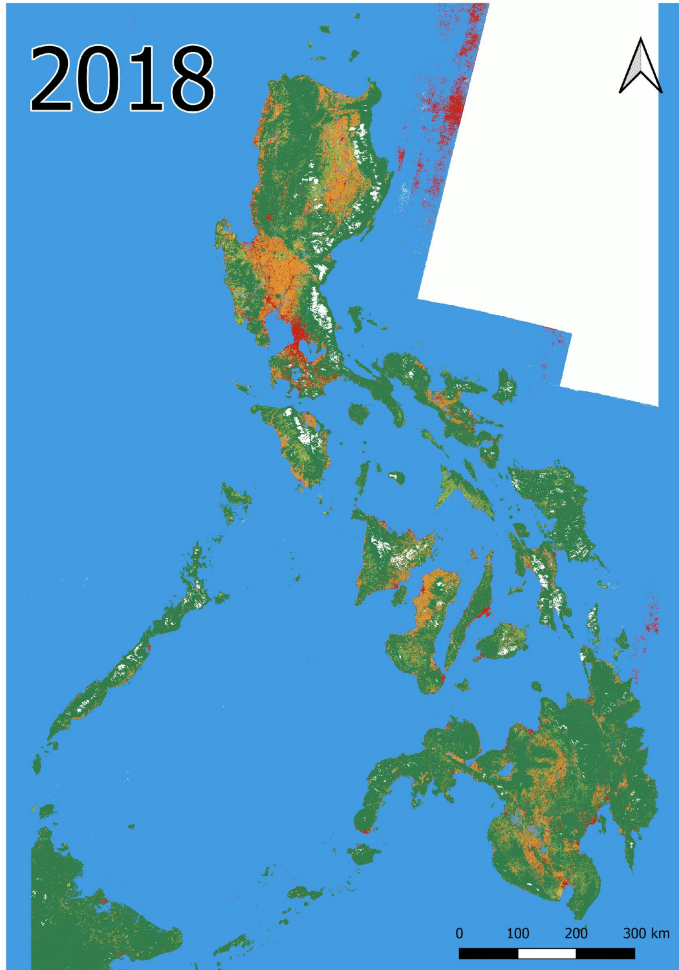
The CopPhil Program



National Copernicus Capacity Support Action Programme for the Philippines

Possible Pilot Projects

- Land cover & forest monitoring
- Benthic habitat monitoring
- Marine plastic monitoring
- Corn monitoring

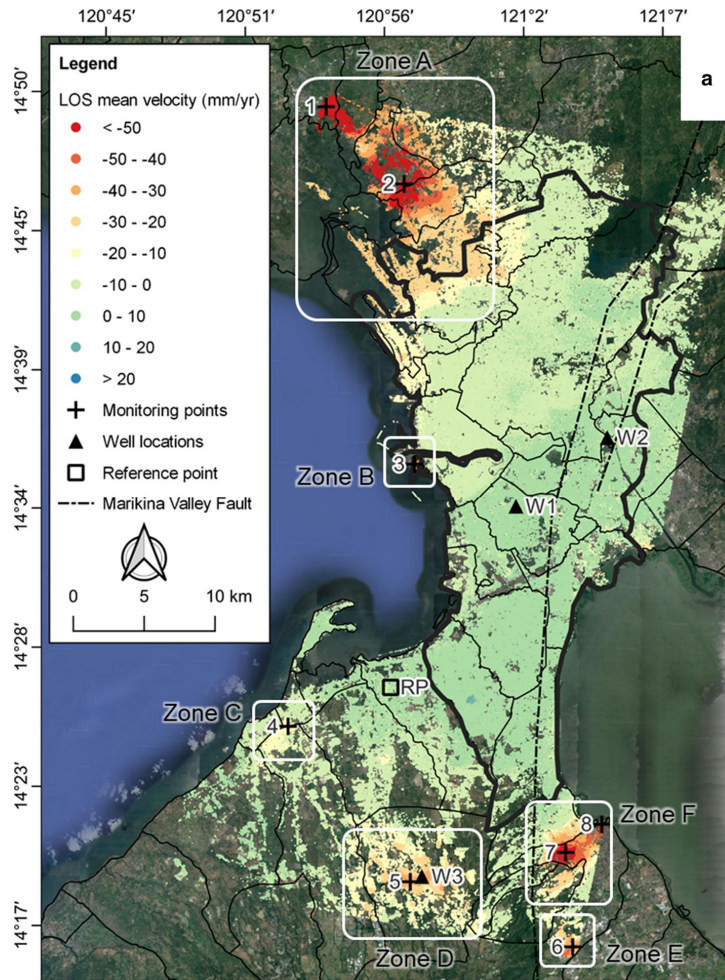




The CopPhil Program

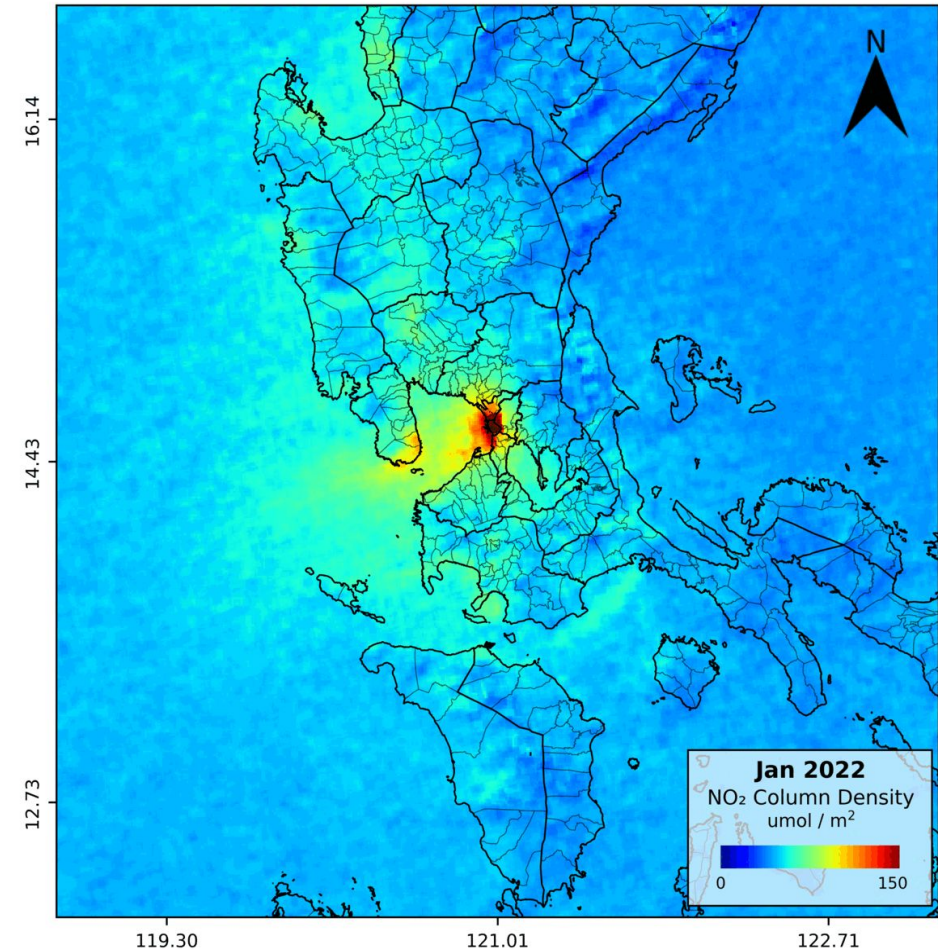
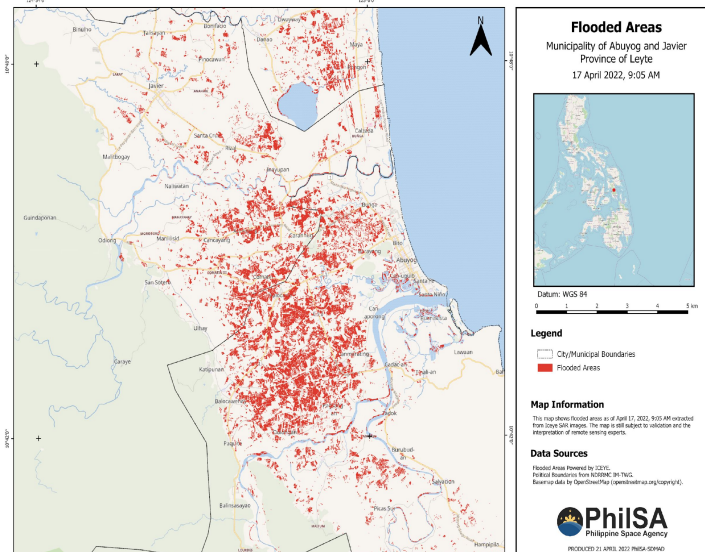


National Copernicus Capacity Support Action Programme for the Philippines



Possible Pilot Projects

- □ Ground deformation monitoring
- Air quality monitoring □
- Flood mapping



Source: Espiritu et al., 2022



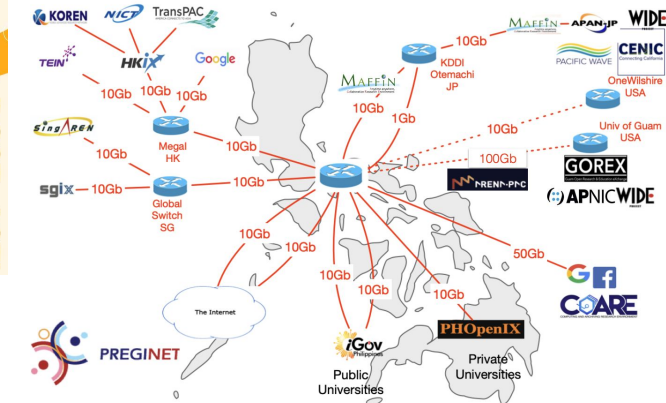
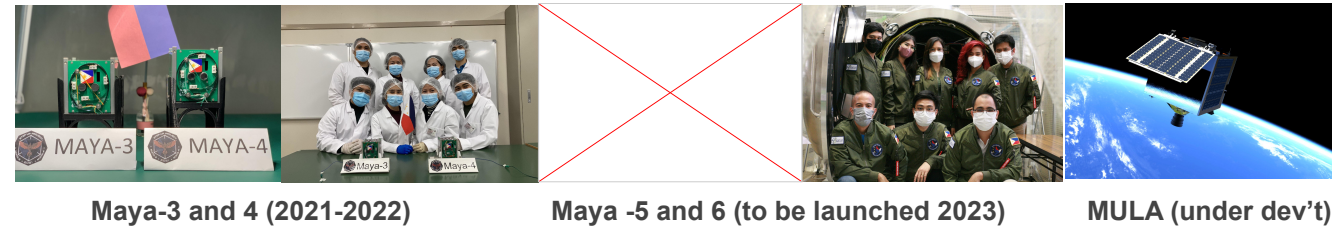
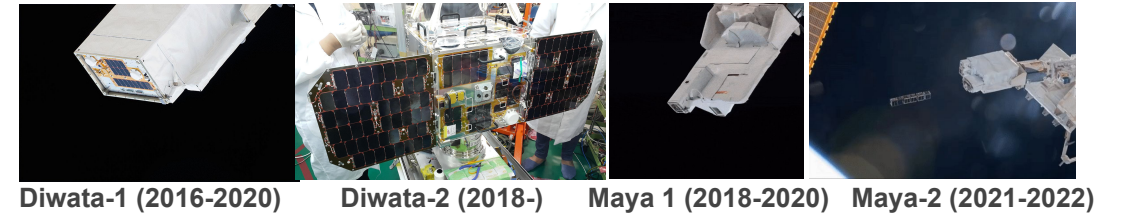
The CopPhil Program



National Copernicus Capacity Support Action Programme for the Philippines

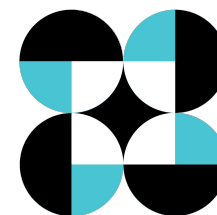


Space upstream: small satellite development



Philippine space data infrastructure supporting the Space Value Chain

Thank you!



PhilSA